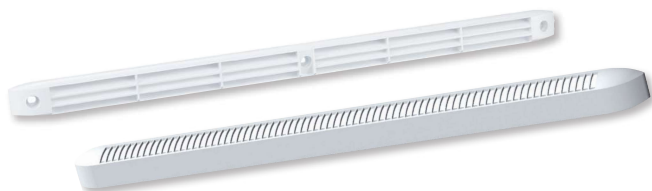


EC-N



Self-regulating air vents, manufactured in white or brown polystyrene. Guaranteeing air renewal in a home through the main rooms (Living room, sitting room and bedrooms). Enabling an airflow of 22, 30 and 45 m³/h. Fitted either to carpentry elements (in openings measuring 354x12 mm) or connected to a wall feedthrough tube. The EC N air vent has a cover that includes an insect grille, available in white or brown.

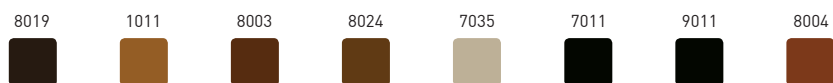
LxWxH (mm): 295 x 20 x 8 (EC-N 22 and 30)
400 x 23 x 12 (EC-N 45)



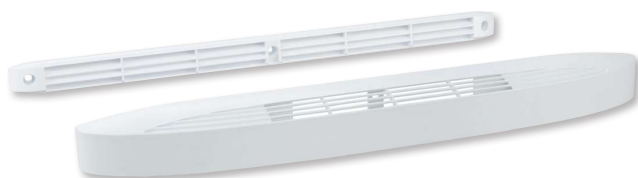
LxWxH (mm): 305 x 20 x 18 (EC-N 22 and 30)
390 x 24 x 20 (EC-N 45)

Model	RAL	Airflow (m ³ /h)	Dn,e,w (ctr)
EC-N 22 White	1013	22	35
EC-N 30 White	1013	30	34
EC-N 45 White	1013	45	33

On request (RAL):



ECA



Self-regulating air vents, manufactured from injection moulded polystyrene and available in three air volume range (22, 30, 36 and 45 m³/h). Fitted in openings measuring 354x12 mm. Suitable for installation on window joinery by crews. The air inlet acoustic element is placed on the indoor side while the cover is fitted on the external side of the joinery. An additional acoustic element can be slot into the air inlet (ECA+RA).

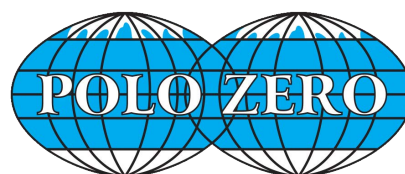
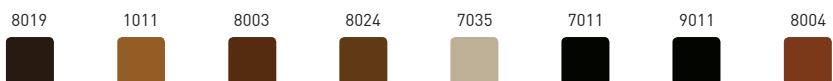
LxWxH (mm): 400 x 23 x 12



LxWxH (mm): 422 x 45 x 45

Model	RAL	Airflow (m ³ /h)	Dn,e,w (ctr)
ECA 22 White	1013	22	39
ECA 30 White	1013	30	39
ECA 36 White	1013	36	38
ECA 45 White	1013	45	37

On request (RAL):



COMPONENTES PARA REFRIGERAÇÃO, LDA.

ECA-RA



Self-regulating air vents, manufactured from injection moulded polystyrene. They allow air renewal in a house via main rooms (living room, dinning room, bathroom).
Airflow of 22,30, 36 and 45 m³/h.
It can be installed on carpentry elements or joined to a wall bypass sleeve.



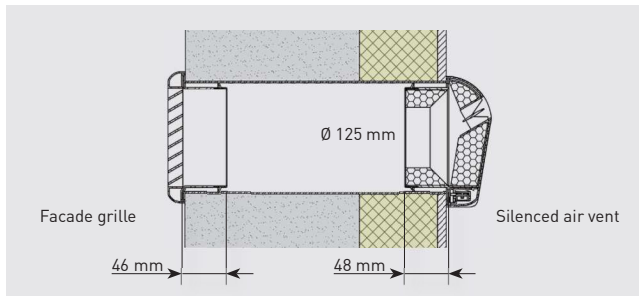
Model	RAL	Airflow (m ³ /h)	Dn,e,w (ctr)
ECA-RA 22 White	1013	22	41
ECA-RA 30 White	1013	30	41
ECA-RA 36 White	1013	36	39
ECA-RA 45 White	1013	45	39

On request (RAL):

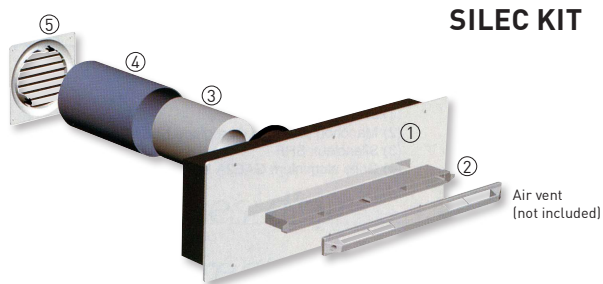


SILEM KIT

Self-regulating air vents with sound attenuator. SILEM KIT allows air renewal in a house via main rooms (living room, dinning room, bathroom).
Airflow of 22 and 30 m³/h
They are fitted into the wall. With this purpose, it is included a sheet metal sleeve (Ø 125 mm and 300 mm length) and external facade grille.



Model	Ø (mm)	RAL	Airflow (m ³ /h)	Dn,e,w (ctr)
SILEM KIT 22	125	9016	22	47
SILEM KIT 30	125	9016	30	47



SILEC KIT

Wall feed through tube sound attenuator polystyrene. Fitted to any wall surface after perforating the wall and embedding a 125 mm diameter PVC tube.

SILEC KIT - Elementos	
①	Sound attenuator (535 x 195 ext) (500 x 160 int) Ø 125 mm
②	Plastic adaptor piece. Length: 50 mm
③	Acoustic tube 30 m ³ /h 51 dB(A). Length: 140 mm
④	PVC Ø 125 tube to embed in the wall. Length: 200 mm
⑤	Wall grille Ø 125 with 150 x 150 mm clips

Model	Dn,e,w (ctr)
SILEC KIT + EC-N 22	51
SILEC KIT + EC-N 30	51
SILEC KIT + EC-N 45	49
SILEC KIT + ECA-HY 6/45	50

The SILEC KIT does not include the sound attenuator



MNG

Connectors made of galvanized sheet steel 0.75 mm thick. Used for fitting air inlets in walls. Adapted to the air inlet grilles or air vents measuring 354 x 12 mm.

Model	Dimensions LxWxH (mm)
MNG M1 L70	360 x 70 x 15
MNG M1 L100	360 x 100 x 15
MNG M1 L200	360 x 200 x 15
MNG M2 L250	365 x 250 x 18

MNG M1 Adjustable connector (male)

MNG M2 Fixed connector (female)